

Museum

MEMOS

Editor: Grace Kensa

Vol. IV, No.1

March 2025

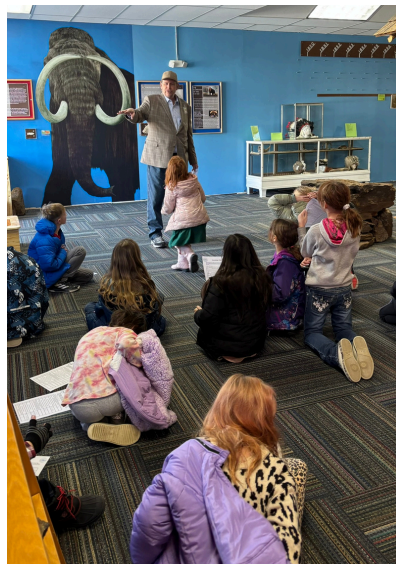


We won the Christmas Window Showcase contest! We were also nominated for 'best storefront'.



Staff Christmas Party

Every year the museum staff take off a day for our annual Christmas party. This year we decided to spend the day in Wichita where we visited two museums and played mini golf before getting dinner. While having fun, we like to go to other museums to get inspiration for ours.

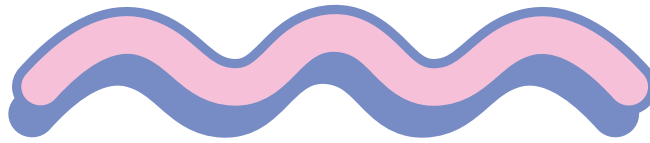
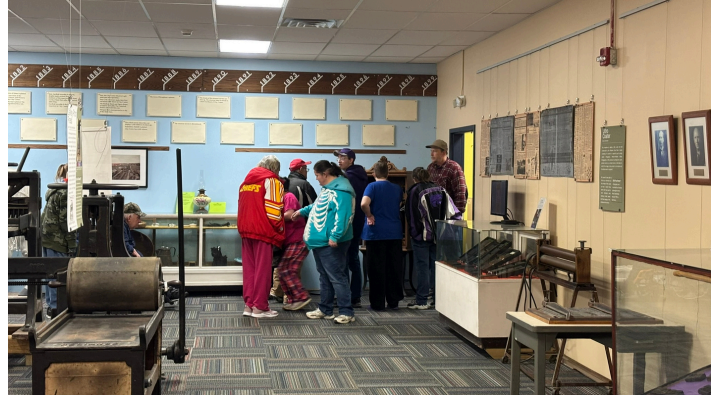


4th Grade Kansas Day

Kansas Day celebrates the day that Kansas became a state, January 29, 1861. 4th graders from Garfield Elementary spend a day learning about Kansas, life in a one room schoolhouse, and much more.

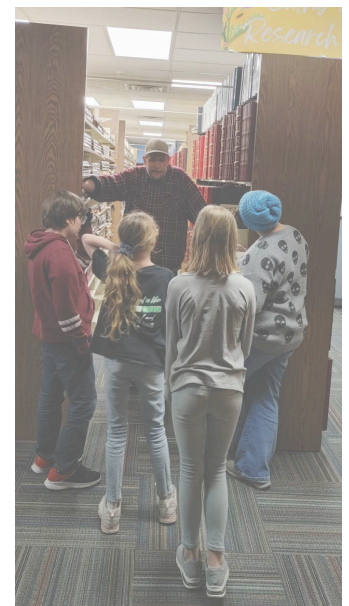
Big Lakes

About once year, Big Lakes Developmental Center brings a group in for a tour of the museum. Jeff always has a great time taking them around and we think they enjoy it, too!



Night at the Museum

The Clay Center Scout BSA troop recently spent a night at the museum. While here Jeff taught them about researching history and gave them a tour of the museum.



Scramble

We hosted Scramble again last month. We raised \$850 that will go toward buying a rolling platform ladder for our storage areas.



New Fur Display

Thanks to a grant from the Clay Center Community Improvement Foundation, we are building a new fur display. We've slowly been trying to introduce interactive exhibits and this is something we've been talking about for awhile. It will look something like this display we saw at the Museum of World Treasures in Wichita.



The furs in the display will be from native Kansas animals.



NEW ACQUISITION

We recently received a box of Charles Wood's things. For those that don't know, Charlie was a local aviator and inventor who ran his own toy company from the 1920s to the beginning of WWII. He was also one of the inventors of the first snowmobile.



STATISTICS From our Collection

7,261

Items in our
clothing
collection

1,251

Hats

706

Dresses

174

Men's
pants

407

Pairs of
shoes



DONATE ONLINE

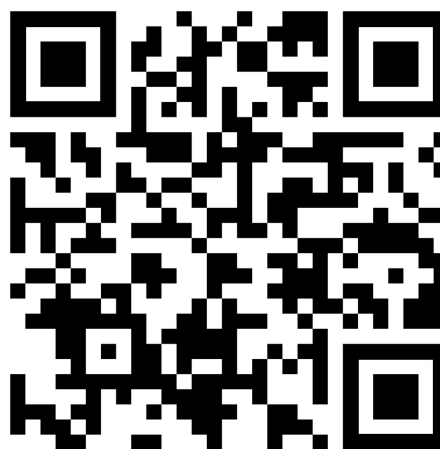
Donations are a vital part of our funding each year and always greatly appreciated!



To make donating simpler, we now offer the option of donating online through PayPal! Just use the QR code to the left and choose your gift amount. With PayPal, you can do a one-time donation or set it up as a recurring donation.

ONLINE NEWSLETTER

Thank you to everyone who has switched to a digital newsletter. You can start getting your newsletter online by signing up using the QR code below. Scroll to the bottom of the webpage to find the sign up form.





Benefits

For All Members

- *Museum Memos*, our Quarterly Newsletter
- Special Event Information
- Invitation to our Annual Meeting
- Discounted Event Tickets
- 5% Discount in the Museum Gift Shop

Name: _____

Address: _____

City: _____ State: _____ Zip: _____

Telephone: _____

Email*: _____

*By providing an email address, you consent to receiving newsletters, event notifications, etc. from the Historical Society by email.

Memberships Support:

- Museum Operation
- New Displays
- Special Events
- Buildings on Heritage Row

Please:

- Add \$5 to your membership dues if you would like correspondence by mail.
- Make checks payable to Clay County Historical Society.

Levels

- ☐ Individual - \$15
- ☐ Family - \$60
- ☐ Patron - \$250
- ☐ Sponsor - \$500
- ☐ Benefactor - \$1,000
- ☐ Historian - \$3,000

All memberships are annual (12 consecutive months).
Memberships are tax-deductible to the extent provided by law.

MUSEUM MEMOS

Contact Us

Address

518 Lincoln Ave
Clay Center, KS 67432

Museum Hours

Tues - Sun 1:00 pm – 5:00 pm
Free Admission

Contact

(785) 632-3786
ccmuseum@twinvalley.net
www.claycomuseum.com

Museum Staff

Director: Jeff Gaiser

Curator of Artifacts: Diana Shaner

Curator of Documents: Grace Kensa

Board Members

President: Mike Bulk

Vice-President: Marlin Mugler

Treasurer: Terri Parry

Secretary: Linda Cunningham

Louise Yarrow

Nicole Liby

Lynn Greenlee

Brad Fowles

Pat Gilbert

Tom Nelson

Marcus Seirer

Frankie Murrin



Clay County Museum

518 Lincoln Ave
Clay Center, KS 67432

Return Service Requested

