

Museum

MEMOS

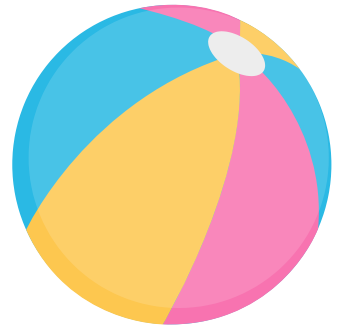
Editor: Grace Kensa

Vol. II, No. 2

June 8, 2023



HELLO SUMMER!

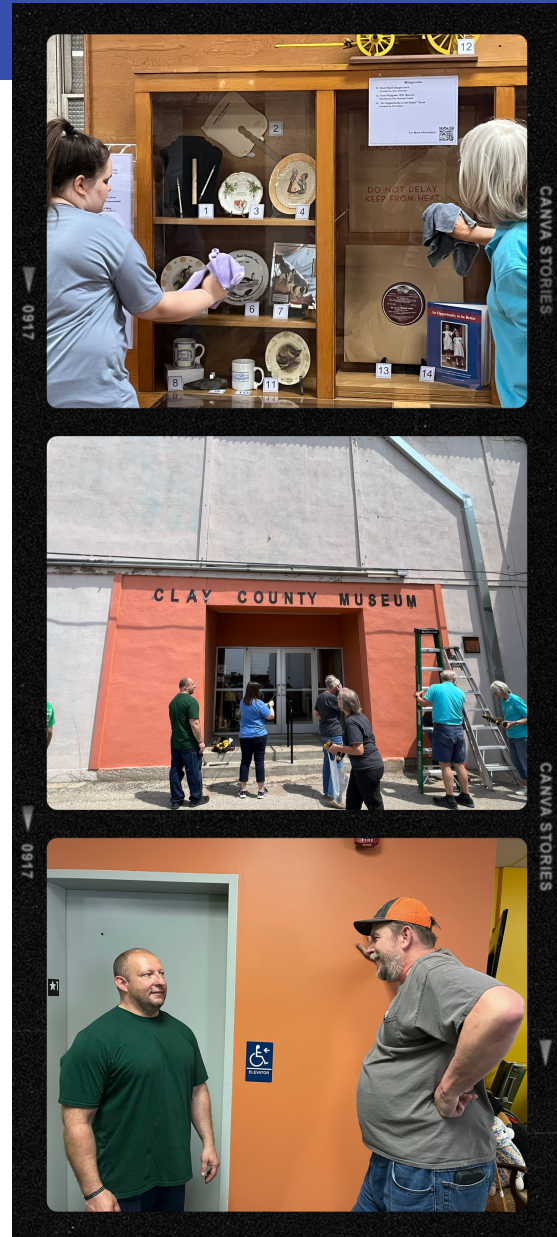


It's never boring around here when volunteers are putting windows together!



SERVICE DAY

CCCOV
clay center covenant church



Thank you to the Clay Center Covenant Church!! They came during Service Day and were a HUGE help.

We were able to get so much done; floors were swept, display cases were cleaned, fabric was sorted for the garage sale, our west basement was cleaned out, the meeting room carpet was shampooed, and our front room was cleaned out.

SCRAMBLE

We hosted Scramble on May 3rd and had a blast! We served breakfast for dinner and it was a hit!



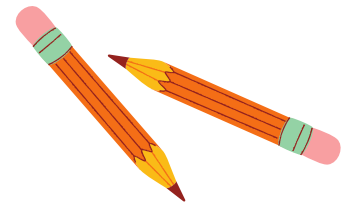
We raised \$1,000 and it's all thanks to everyone who came out to support us!

We want to especially thank United Bank & Trust for sponsoring our meal!!

Summer School



Museum Director, Jeff, gave a tour of our first floor.



4th, 5th, and 6th graders were in here on Wednesday (the 7th) as part of Garfield's summer school program.

Curator of Documents, Grace, led them in a scavenger hunt throughout our second floor.

1986 MORGANVILLE CENTENNIAL PART 4

BY PAT GILBERT

Here's the final part of this story. We hope you have enjoyed this story.

Continued from March Newsletter:

The Avanti Club house tour included several of the older homes of Morganville. Mark and Joan Lovendahl were living in Velma Carson's house at the time and they opened it up for the home tour. Kathy Knoettgen said that her home was also on the tour. Kathy and Arnie had moved back to Morganville in the 1970's and had restored what had been the nursing home. That nursing home was owned and run by Afton Knoettgen. Nancy and Neil Johnson also opened their home for the tours. Kathy remembered that each home owner had to make a sign and put in front of the house with the history of the home on it. Helen Hanson and Dan Roenigk had worked hard to trace the history of most homes and every business in Morganville. Each store window had a sign in it with the history of ownership and the business that had been in the store on the sign. Joan remembered that she was exhausted from going up and down the steps with the tours.

The video has some footage of the meal being served out of the fire station in the evening. Currently, when we have a community meal, it is served in front of the restaurant on the West side of Main Street. At that time, Bob's was still open and the current restaurant was not a restaurant yet. There was a long line and lots of people. The video showed the picnic tables were placed in the shade around the fire station and also over in the church yard.

The video also showed the line for the UMW ice cream social. The church still does homemade ice cream when we have an after-Harvest celebration or the Red Bandana Run in Morganville.

The evening entertainment of the Horizons, Crossroads and Grain Belters was in "the Pit". Anyone who has ever been around Morganville knows of "The Pit". It was where free picture shows were shown on Wednesday evening during the summer when I was a kid.

“The Pit” was a National Youth Administration project in 1939. Located South of the stop sign on the west side of Main Street, the pit is approximately 75’X 100’. The bottom or floor of the pit is sunken 10’ into the ground. Concrete forms wide, deep steps going down into the pit. The East edge of the pit has oblong limestone rock (1’X2’) stacked to waist high. There is an opening to go down into the pit midway of the 75’ East wall. The North, South and West walls are also made of limestone rocks. Then there is a 36’ grassy area between the steps and the concrete stage that is at the west end of “the pit”. Several generations of children have had a lot of fun climbing in and out of “The Pit”.

The video shows a crowd eager to watch the entertainment. “The Pit” was full of people sitting on the steps of the pit but people were also five and six deep sitting in lawn chairs around the top on the north and south sides of the pit. The video has some of the singing of the Crossroads, Grain Belters and Horizons on it. Ken Lang was leading the men’s groups of the Crossroads and Grain Belters. The men not only sang but it appeared that they had a lot of fun interacting with the crowd.

The Horizons, the women's quartet, contained Maribeth Mugler, Molly Bierking, Kami Thomas, and Denise Hammond. The video shows that it was the perfect end to a perfect day.

The people of Morganville had worked hard to put on a special celebration for the Centennial. From what I remember and what the video shows, they accomplished their mission! However, August 16th is not the end of the Centennial story.

Five weeks later, on September 28, 1986 the people of Morganville pulled together again. This time it was to celebrate the Centennial year of the Morganville United Methodist Church. The corner stone for the church had been laid on September 30, 1896. There is also video at the museum of the morning and afternoon services held on the September 28.

I am no sure who took the videos. If you view the videos at the museum, please do not expect high production quality. They are home videos. They are fuzzy at times and the sound is not good. But I found it interesting to take a trip down memory lane.

This concludes the Morganville Centennial story.

NEWS

Welcome!

We have two new board members we'd like to welcome aboard, Louise Yarrow and Vevia Beaulieu!

Coming Soon

The Museum will soon have a Gift Shop! We'd like to hear from our supporters on what they'd like to see in our gift shop. Have an idea? Email us at ccmuseum@twinvalley.net.

Facebook

We're still doing Name That Artifact. We've also added a weekly post about photos in our collection.

Garage Sale

The Museum participated in the HWY 24/Citywide Garage Sale and got rid of some of our surplus items. Thank you to everyone who came! We made \$260. Every bit helps keep us open.

One Room School

Our one-room schoolhouse at heritage road, King School, saw two different groups of students in May. Mrs. Pfizenmaier's 4th Grade Class from Garfield as well as Mrs. Hatesohl's 1st/2nd Grade Class from Linn Lutheran School.

NEW ACQUISITIONS

We've got some real antiques to show you this quarter!



Wanda Gunn brought us her treasured Garfield memorabilia which includes a pot holder and mini plastic paper clips.

Did you ever play with Troll Dolls? Linda Cunningham brought us her old Troll Doll along with all of the outfits she had made it.



RESEARCH

Doing a research project? Looking up your family genealogy?

We Can Help!

We have numerous resources to help answer your questions about
Clay County.

Email: ccmuseum@twinvalley.net

Phone: (785) 632-3786

Facebook: @ccksmuseum

HELP US SAVE TREES & COST

We would like your help in preserving the environment while also preserving our wallets. In an effort to save both trees and cost, we are transitioning our newsletters to digital copies sent out in emails. Please reach out to us through the mail-in form below or through our various contact methods if you would like to receive future communications and newsletters digitally in the future.

YES! I want contribute to helping save trees by receiving all future communications and newsletters digitally.

NAME _____

EMAIL _____

STATISTICS For This Quarter

213

Visitors
From

6

States

400

Artifacts
Donated

11

Hours of
Research

1

Research
Requests

Morganville Centennial

This crossword is based on the last installment of Pat Gilbert's *1986 Morganville Centennial* story. Can you find all the words?

H	T	Q	C	X	O	R	X	O	V	M	L	I	R	H
O	B	H	S	L	Z	F	K	Y	O	D	D	E	Z	C
R	N	Q	E	L	J	J	M	R	E	D	G	A	G	E
I	B	W	J	P	D	K	G	P	X	E	T	J	X	N
Z	P	A	O	A	I	A	B	O	S	M	W	N	S	T
O	Z	I	O	Y	N	T	S	S	B	I	Q	Q	H	E
N	R	N	R	V	W	J	L	Z	B	L	H	Y	V	N
S	N	U	I	S	D	A	O	R	S	S	O	R	C	N
X	Z	L	S	R	R	G	O	L	R	L	Z	W	S	I
X	L	L	L	T	R	K	H	S	R	C	K	A	T	A
E	J	Z	X	L	K	C	P	A	G	J	V	Z	L	L
O	H	I	H	J	C	V	D	B	Q	U	F	V	I	G
G	R	A	I	N	B	E	L	T	E	R	S	M	F	T
R	T	R	O	B	D	G	R	B	P	Z	W	K	A	Y
N	B	U	L	C	I	T	N	A	V	A	P	F	K	H

AVANTI CLUB
CENTENNIAL
CROSSROADS
GRAIN BELTERS
HORIZONS
MORGANVILLE
THE PIT

WAYS TO DONATE



Did you know you can make a donation to our fund with the Clay Center Community Improvement Foundation at any time? Donate Here: www.claycentercif.org/make-a-donation.cfm



Give gifts of grain or livestock



Stocks



In-kind donations of goods, services, time, or expertise



Donor Advised Fund



Donate from your IRA required minimum distribution (RMD)

All money raised goes toward keeping the museum open and staffed. Without your help, the Clay County Museum would not exist.



We accept donations through PayPal! Find us as **Clay County Historical Society** in the PayPal Giving Fund.

As always, we have several projects and updates that we need to accomplish.

Your support helps us:

Buy archival safe supplies

Repair warehouse roof and walls

Continue upkeep of historical buildings

Acquire professional software for collections care

Buy more energy efficient lighting to create safer work areas

Repair heating and cooling units within the museum

Repair and upgrade our storage warehouse

Upgrade technology

Any donation over \$15 gives you automatic membership to the Clay County Historical Society. Membership benefits include first access to this newsletter as well as discounted tickets for Historical Society or Museum events.

Membership forms and dues can be turned in at or mailed to:

Clay County Museum 518 Lincoln Ave, Clay Center, KS 67432

Updated 01/2022

Support the Clay County Museum

Individual Form

___ **Ruby Level** - \$2,000 Includes sponsoring . . .

- repairs to the Museum's roof
- a speaker at the Historical Society's annual meeting
- a traveling exhibit
- a new exhibit in the Museum

and

• annual membership in the Historical Society

___ **Diamond Level** - \$1,000 Includes sponsoring . . .

- repairs to the Museum's roof
- a speaker at the Historical Society's annual meeting
- a new exhibit in the Museum
- annual membership in the Historical Society

___ **Platinum Level** - \$1,500 Includes sponsoring . . .

- repairs to the Museum's roof
- a speaker at the Historical Society's annual meeting
- a traveling exhibit
- replacement glass in Museum display cases

and

• annual membership in the Historical Society

___ **Gold Level** - \$500 Includes sponsoring . . .

- repairs to the Museum's roof
- a new exhibit in the Museum
- annual membership in the Historical Society

and

___ **Emerald Level** - \$40 Includes sponsoring . . .

- repairs to the Museum's roof
- annual membership in the Historical Society

___ **Silver Level** - Adult \$15, Under 12 yrs \$5 Includes . . .

- annual membership in the Historical Society

Name _____

Address _____

City _____

Email _____

Phone _____

State _____ Zip _____

MUSEUM MEMOS

Contact Us

Address

518 Lincoln Ave
Clay Center, KS 67432

Museum Hours

Tues - Sun 1:00 pm – 5:00 pm
Free Admission

Contact

(785) 632-3786
ccmuseum@twinvalley.net
www.claycomuseum.com

Museum Staff

Director: Jeff Gaiser

Curator of Artifacts: Diana Shaner

Curator of Documents: Grace Kensa

Board Members

President: Mike Bulk

Vice-President: Kerri Spielman

Treasurer: Terri Parry

Secretary: Pat Gilbert

Louise Yarrow

Carol Laffery

Reuben Lang'at

Brad Fowles

Marlin Mugler

Tom Nelson

Marcus Seirer

Vevia Beaulieu

Clay County Museum

518 Lincoln Ave

Clay Center, KS 67432

Return Service Requested